

Customer :

customer

Customer part :

customer part

Comment :

Comment

S1=5.05

S2=6.78

Tmax=470

Tp S2=509.0

PI=0.43

HI=91

Sample =1800.3

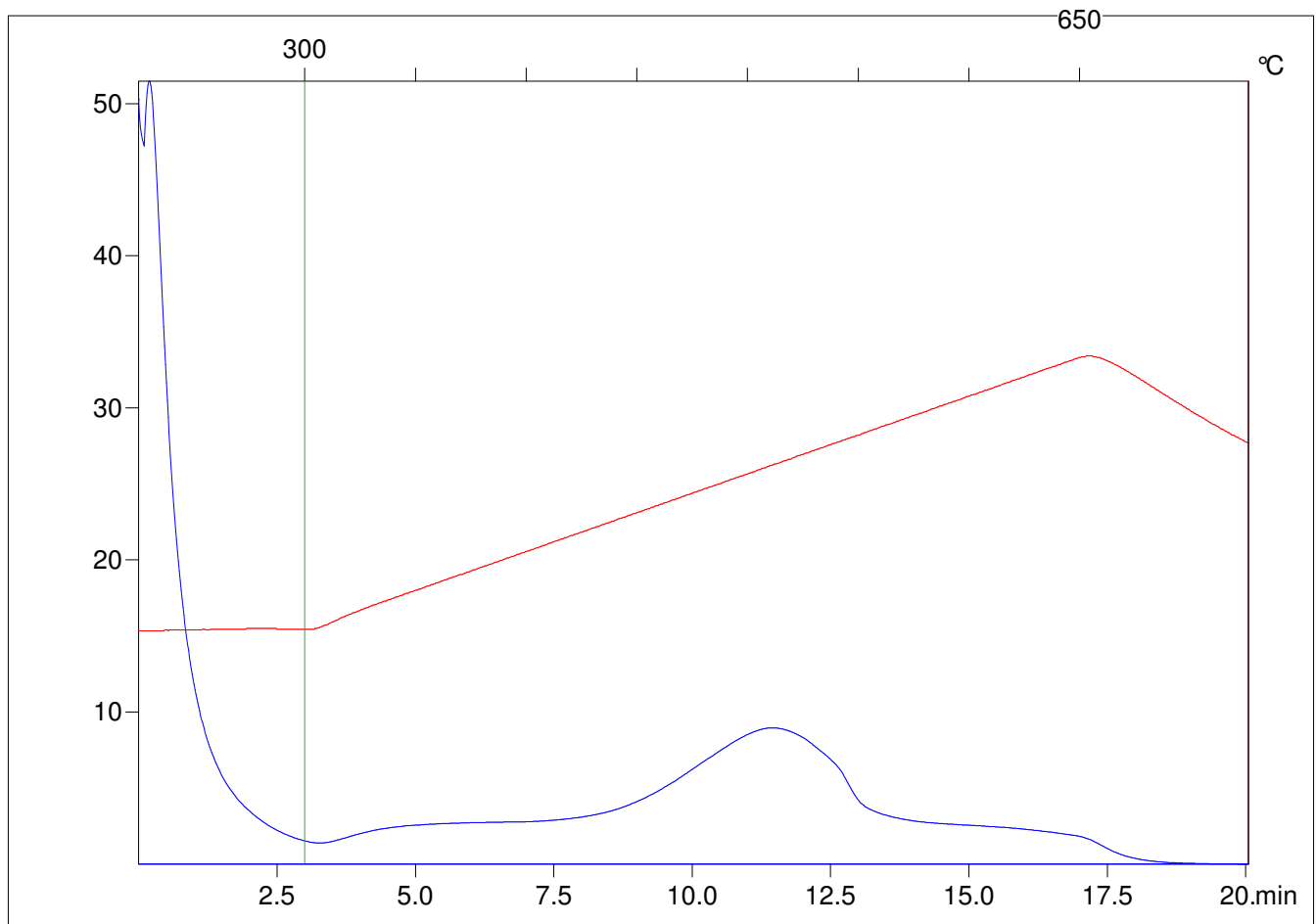
Method =Bulk Rock

Cycle=Basic

KFID(10*9)=1444

Qty =70.7

TOC=7.42



C:\VINC\PK4_1792\PK012.R00 : FID pyrolysis graphic

State

Pyro Status

Oxi Status